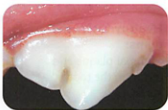


The Stages of Periodontal Disease in Dogs

Healthy teeth and gums:

Minimal plaque and tartar on the tooth surface.



Stage 1 - Gingivitis:

Plaque and slightly disagreeable mouth odor.



Stage 2 - Early periodontal disease:

Gum inflammation, swelling and moderate bad breath.



Stage 3 - Moderate periodontal disease:

Pustular discharge, bone loss, bleeding and bad breath.



Stage 4 - Advanced periodontal disease:

Inflammation, swelling, bleeding, pus, bone loss, loose teeth and severe bad breath.

